

## FEATURES

- High Efficiency: Up to 96%
- 600KHz Frequency Operation
- 2A Output Current
- No Schottky Diode Required
- 4.5V to 16V Input Voltage Range
- 0.6V Reference
- Slope Compensated Current Mode Control for Excellent Line and Load Transient Response
- Integrated internal compensation
- Stable with Low ESR Ceramic Output Capacitors
- Over Current Protection with Hiccup-Mode Thermal Shutdown
- Inrush Current Limit and Soft Start
- Available in SOT23-6 Package
- 40°C to +85°C Temperature Range

## APPLICATIONS

- Distributed Power Systems
- Digital Set Top Boxes
- Flat Panel Television and Monitors
- Wireless and DSL Modems
- Notebook Computer

## GENERAL DESCRIPTION

The TCS1488 is a fully integrated, high-efficiency 2A synchronous rectified step-down converter. The TCS1488 operates at high efficiency over a wide output current load range.

This device offers two operation modes, PWM control and PFM Mode switching control, which allows a high efficiency over the wider range of the load.

The TCS1488 requires a minimum number of readily available standard external components and is available in an 6-pin SOT23 ROHS compliant package.

## TYPICAL APPLICATION

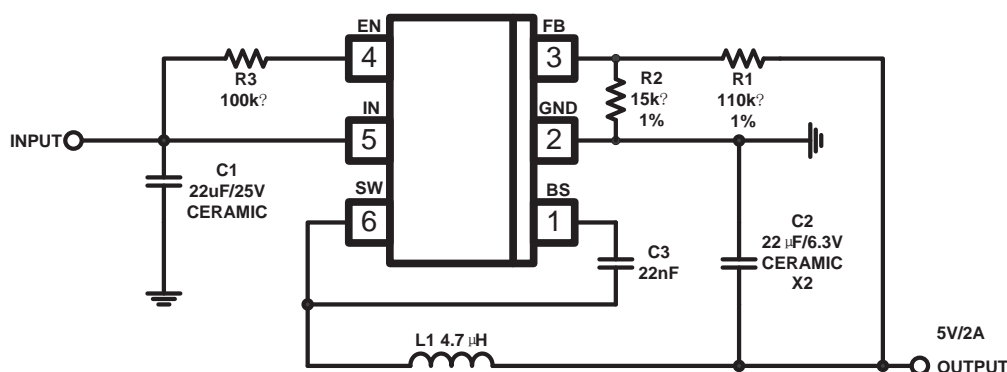


Figure 1. Basic Application Circuit