

Description

The TCS2102B is a CMOS linear regulator. It is featuring low quiescent current, low output voltage noise, low dropout voltage and fast transient response. It guarantees delivery of 300mA output current, and it is available in adjustable output voltage from 0.8V~4.6V.

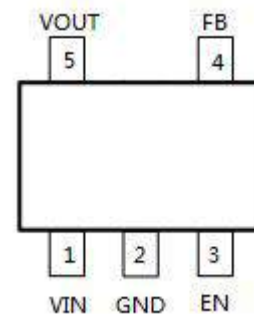
Based on its low quiescent current consumption and its less than 1uA shutdown mode, the TCS2102B is ideal for battery- powered applications. The high power supply rejection ratio of the TCS2102B holds well for low input voltages typically encountered in battery-operated systems. The regulator is stable with small ceramic capacitive loads (1μF typical).

Feature

- ◆ 300mA output current
- ◆ Adjustable output voltage range: 0.8V to 4.6V
- ◆ ±2% Initial voltage accuracy
- ◆ Operating input voltage range: 2V to 6V
- ◆ Ultra low dropout voltage 190mV @ 300mA
- ◆ Low quiescent current 40uA
- ◆ <1uA shutdown current
- ◆ Short-circuit protection
- ◆ Over-temperature protection

Application

- ◆ CDMA / GSM
- ◆ Portable communication equipment
- ◆ Camera modules
- ◆ Battery Powered Systems
- ◆ Portable Device



Package Type : SOT-23-5L

Typical Application

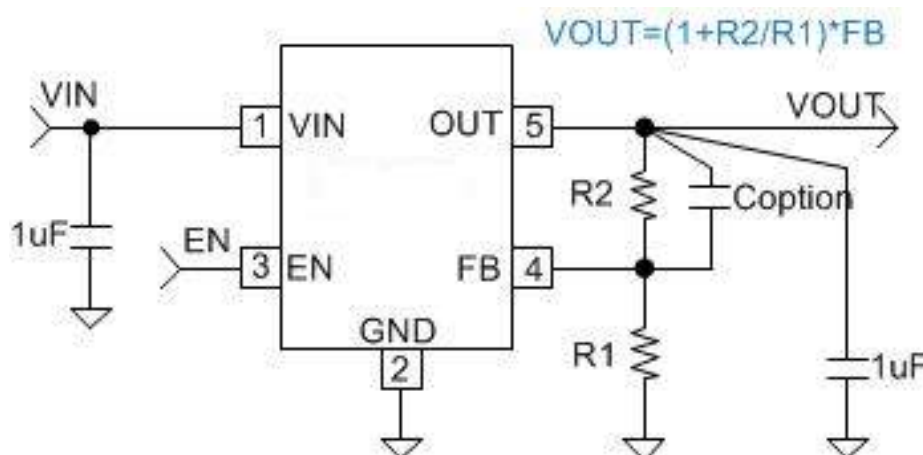


Figure 1 Typical Application of TCS2102B