

Features

- Wide 4.5V to 100V Operating Input Range
- 2A Continuous Output Current
- 450KHz Switching Frequency
- Short Protection with Hiccup-Mode
- Built-in Over Current Limit
- Low Noise & Low EMI Signature
- Integrated internal Soft-Start
- 500mΩ Low RDS(ON) Internal MOSFETs
- Output Adjustable from 0.78V
- 98% Duty cycle max
- Thermal Shutdown
- Current Mode
- MSL3 Package Level

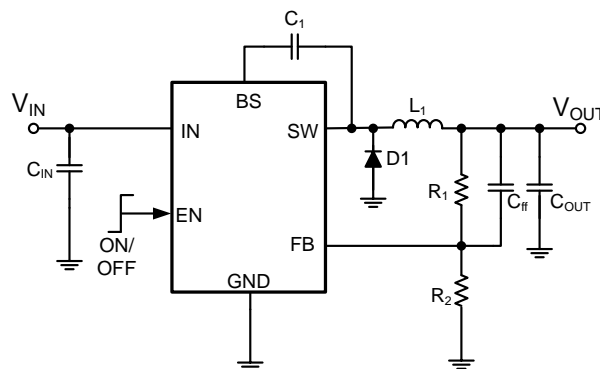
General Description

The TCS4013 is a low EMI signature, asynchronous, step-down, switch-mode converter with internal power MOSFETs. It offers a very compact solution to provide 2A continuous current over a wide input supply range, with excellent load and line regulation. TCS4013 achieves low EMI signature with well controlled switching edges. Fault condition protection includes programmable-output over-voltage protection, Constant on time Mode, and thermal shutdown. TCS4013 requires a minimal number of readily available standard external components. It is available in ESOP8 package.

Applications

- Automotive Entertainment
- Wireless and DSL Modems
- Computer Entertainment
- IoT Applications
- Digital Still and Video Cameras
- GPS & E-Bike & E-motors

Simplified Application Circuit



Basic Application Circuit