

### FEATURES

- High Efficiency: Up to 96%(@3.3V)
- 1.5MHz Switching Frequency Operation
- PFM Operation in Light Load Condition
- 1.5A Output Current
- No Schottky Diode Required
- 2.5V to 5.5V Input Voltage Range
- Output Voltage as Low as 0.6V
- 100% Duty Cycle in Dropout
- Low Quiescent Current: 50μA
- Slope Compensated Current Mode Control for Excellent Line and Load Transient Response
- Short Circuit Protection
- Thermal Fault Protection
- Inrush Current Limit and Soft Start
- Input over voltage protection (OVP)
- <1μA Shutdown Current
- SOT23-5 Package

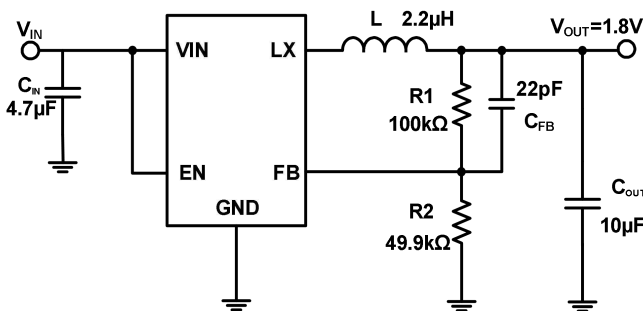
### GENERAL DESCRIPTION

The TCS4175B is a high efficiency, current mode PWM step-down converter with PFM in light load. The device integrates a main switch and a synchronous rectifier for high efficiency without an external Schottky diode. It is ideal for powering portable equipment that runs from a single cell Lithium-Ion (Li+) battery. The output voltage can be regulated as low as 0.6V. The TCS4175B can also run at 100% duty cycle for low dropout operation, extending battery life in portable system. This device offers two operation modes, PWM control and PFM Mode switching control, which allows a high efficiency over the wider range of the load.

### APPLICATIONS

- Cellular and Smart Phones
- Wireless and DSL Modems
- PDA/MID/PAD
- Digital Still and Video Cameras

### TYPICAL APPILCATION



### Efficiency

$V_{OUT}=1.8V, I_{OUT}=0.01A \text{ to } 1A, L=2.2\mu H, T_A=25^\circ C$

