

## General Description

The TCS4219C is a low EMI signature, asynchronous, step-down, switch-mode converter with internal power MOSFETs.

It offers a very compact solution to provide 1.5A continuous current over a wide input supply range, with excellent load and line regulation. TCS4219C achieves low EMI signature with well controlled switching edges. Fault condition protection includes programmable-output over-voltage protection, Constant on time Mode, and thermal shutdown.

TCS4219C requires a minimal number of readily available standard external components. It is available in SOT23-6 package.

## Features

Wide 4.0V to 30V Operating Input Range

1.5A Continuous Output Current

1.4MHz Switching Frequency

Short Protection with Hiccup-Mode

Built-in Over Current Limit

Over-Voltage Protection

CCM Mode for Low Noise

Integrated internal Soft-Start

200/150mΩ Low  $R_{DS(ON)}$  Internal MOSFETs

Output Adjustable from 0.8V

Low EMI Signature

98% Duty cycle

Integrated internal compensation

Thermal Shutdown

Available in SOT23-6 Package

Constant on time Mode

## Applications

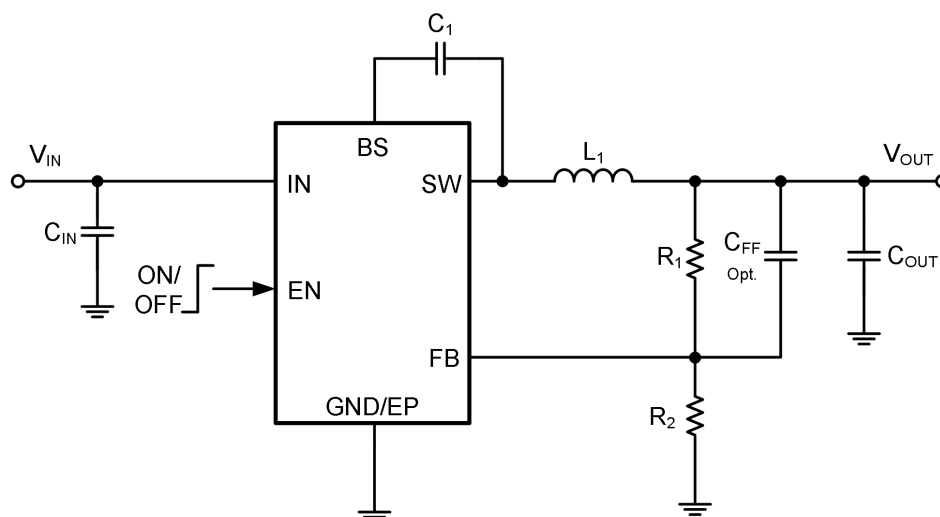
Automotive Entertainment

Wireless and DSL Modems

Computer Entertainment

Power Supply for DVR/NVR/IPC

## Typical Application Circuit



Basic Application Circuit